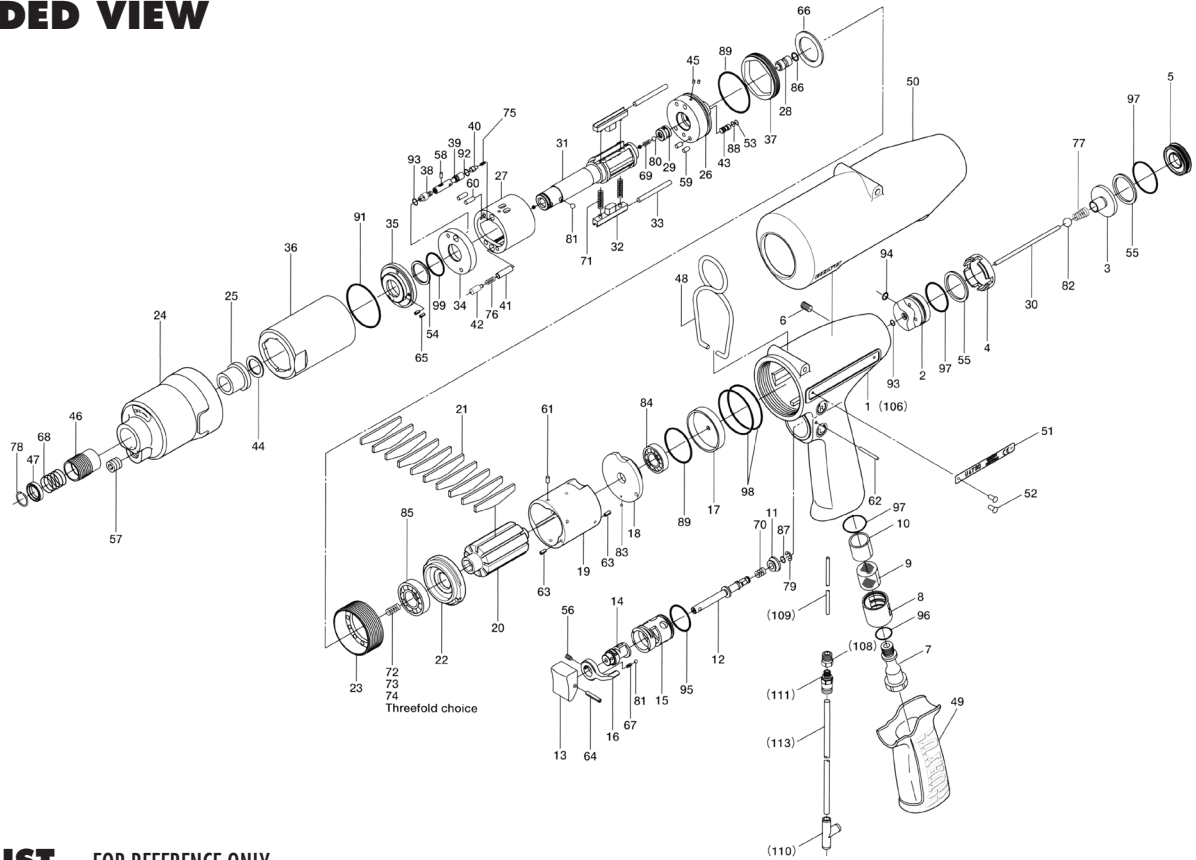


UAT-30D SERIES OIL-PULSE WRENCHES

EXPLODED VIEW



PARTS LIST — FOR REFERENCE ONLY

Index Number	Part Number	Description	Qty.	Index Number	Part Number	Description	Qty.	Index Number	Part Number	Description	Qty.
1	18A-025-0	Handle	1	38	145-907-6	Relief Valve Spindle	1	75	976-557-0	Spring 2.9 x 6.9 (0.4) n = 6.5	1 ●
2	145-253-0	Shut-off Valve Bushing	1	39	18C-970-1	Relief Valve	1	76	976-777-0	Spring (3.0 x 13.5)	1 ●
3	145-254-6	Shut-off Valve	1	40	144-270-0	Pressure Valve	1	77	977-063-0	Cone Spring (4.1 x 4.7 x 9)	1
4	145-684-6	Cushion Spacer	1	41	080-274-6	Pressure Valve Spring Collar	1	78	978-117-0	Snap Ring (11.7 x 1)	1
5	145-019-6	Valve Cover	1	42	18A-276-0	Pressure Valve Body	1	79	979-405-0	Outer Snap Ring (E2.5)	1
6	150-108-5	Valve Plug	1	43	178-742-0	Oil Plug	1	80	981-001-0	Ball (3/32)	1
7	147-091-2	Air Inlet Bushing	1	44	145-327-7	Anvil Front Spacer	1	81	981-002-0	Ball (1/8)	2
8	147-780-3	Exhaust Stack	1	45	150-064-5	Plug	2	82	981-003-0	Ball (5/32)	1
9	147-042-2	Silencer	1	46	011-351-1	Bit Sleeve	1	83	981-045-0	Ball (1.5 mm)	1
10	145-835-6	Filter (K50)	1 ■	47	011-352-1	Bit Spacer	1	84	982-014-0	Ball Bearing (607)	1 ■
11	147-100-3	Valve	1	48	174-790-0	Suspension Ring	1	85	982-901-0	Ball Bearing (6900)	1 ■
12	142-104-6	Valve Rod	1	49	18C-842-8	Handle Cover	1	86	990-305-0	O-Ring (APRS68-003KS)	1 ●
13	147-107-2	Valve Lever	1	50	145-840-7	Casing Cover	1	87	990-306-0	O-Ring (APRS68-004)	1
14	147-210-2	Reverse Valve	1	51	18A-924-0	Name Plate	1	88	990-320-0	O-Ring (APRS68-003)	1 ●
15	147-211-2	Reverse Valve Bushing	1	52	930-205-0	Driver Rivet	2	89	990-327-0	O-Ring (JW1530-18)	2 ●
16	098-212-5	Reverse Lever	1	53	944-002-0	Back-up Ring (2.6 x 4.5 x 1)	1 ●	91	990-605-0	O-Ring (25 x 1.45)	1 ●
17	145-291-7	Rear Plate Spacer	1	54	944-212-0	Back-up Ring (12 x 16 x 1.5)	1 ●	92	990-621-0	O-Ring (3.8 x 1.8 x 1.0)	1 ●
18	18A-285-0	Rear Plate	1	55	944-217-0	Back-up Ring (14 x 20 x 1.8)	2	93	990-970-0	O-Ring (SNS-2)	2 ●
19	18A-286-0	Cylinder	1	56	952-106-0	Allen Head Screw (M4 x 6)	1	94	990-971-0	O-Ring (SNS-3)	1
20	18A-287-0	Rotor	1	57	966-099-0	Allen Head Plug (NPT1/16)	1	95	990-912-0	O-Ring (SNS-14)	1
21	18A-288-0	Blade	10 ■	58	970-013-0	Pin (H)(1.5 x 4)	1	96	990-914-0	O-Ring (SNS-16)	1
22	18A-289-0	Front Plate	1	59	970-130-0	Pin (H)(2.45 x 4.5)	2	97	990-916-0	O-Ring (SNS-18)	3
23	144-036-0	Hammer Casing Connector	1	60	970-131-0	Pin (H)(2.45 x 9.5)	2	98	990-925-0	O-Ring (SNS-32)	2 ■
24	144-439-0	Front Casing	1	61	971-102-0	Pin (2 x 3.8)	1	99	992-020-0	SU-Ring (Q12)	1 ●
25	190-328-6	Anvil Bushing	1	62	971-123-0	Pin (2 x 23)	1				
26	18A-901-0	Rear Liner Plate	1	63	973-008-0	Roll Pin (2 x 8)	2				
27	18A-902-0	Liner	1	64	973-014-0	Roll Pin (2 x 14)	1				
28	145-546-6	Piston	1	65	973-040-0	Roll Pin (1.5 x 5)	2				
29	130-929-4	Check Valve Cover	1	66	975-752-0	Adjusting Spacer (15 x 10 x 1)	1				
30	145-130-0	Operating Rod	1	67	976-006-0	Spring (3 x 5)	1				
31	144-350-0	Driver Anvil	1	68	976-327-0	Spring (13.5 x 11)	1				
32	144-440-0	Driving Blade	2	69	976-847-0	Spring 2.4 x 5.3 (0.26) n=7.5	1 ●				
33	145-974-0	Roller (2.5 x 21)	2	70	976-457-0	Spring (7 x 12)	1				
34	18A-973-0	Liner Casing Spacer	1	71	976-782-0	Spring (3.3 x 16) WPC	2 ●				
35	144-904-0	Front Liner Plate	1	72	976-688-0	Spring (3.3 x 17.5)	1				
36	144-905-0	Liner Casing	1	73	976-650-0	Spring (3.3 x 16) Strong	1				
37	144-906-0	Liner Casing Cover	1	74	976-661-0	Spring (3.3 x 17) Weak	1				

PARTS FOR UAT-30D(TM)

106	852-573-1	Handle	1
108	1/16BK1-10F	Barb 10/32 x 1/16NPT x 1/16	1
109	935-358-0	Polyurethane Hose (TU-0212)	1
110	909-442-0	Quick Exhaust (AQ240F-04)	1
111	PQ-MC05N	5/32 x 10/32 Fitting	1
113	935-350-0	Polyurethane Hose (F-1504)	1

ACCESSORIES

120	939-091-0	Allen Wrench (1.5)	1
121	939-105-0	Allen Wrench (4)	1
123	916-810-0	(W) Bit No.2 x 75)	1
124	909-449-0	Speed Controller	1

FOOTNOTES

- = Parts available in Pulse Unit Repair Kit UAT-30D-PRK
- = Parts available in Air Motor Repair Kit UAT-30D-RK



10000 SE PINE
PORTLAND, OR 97216
503-254-6600
FAX 503-255-2615

When ordering spare parts, please specify
tool type, part number, and description.